

The NPS Budget and How It Works



Rocky Mountain National Park, NPS



Rocky Mountain National Park



- Founded in 1915
- 415 square miles
- UN Designated Biosphere for the Alpine Tundra Ecosystem
- Over 4 million visitors per year
- Top 10 most visited national parks in 2015



Activity

What do you think are things the National Park Service has to consider when creating its budget?

List at least 5 things with your groups.

LEGISLATIVE



- ★ Makes laws
- ★ Approves presidential appointments
- ★ Two senators from each state
- ★ The number of congressmen is based on population

EXECUTIVE



- ★ Signs laws
- ★ Vetoes laws
- ★ Pardons people
- ★ Appoints federal judges
- ★ Elected every four years

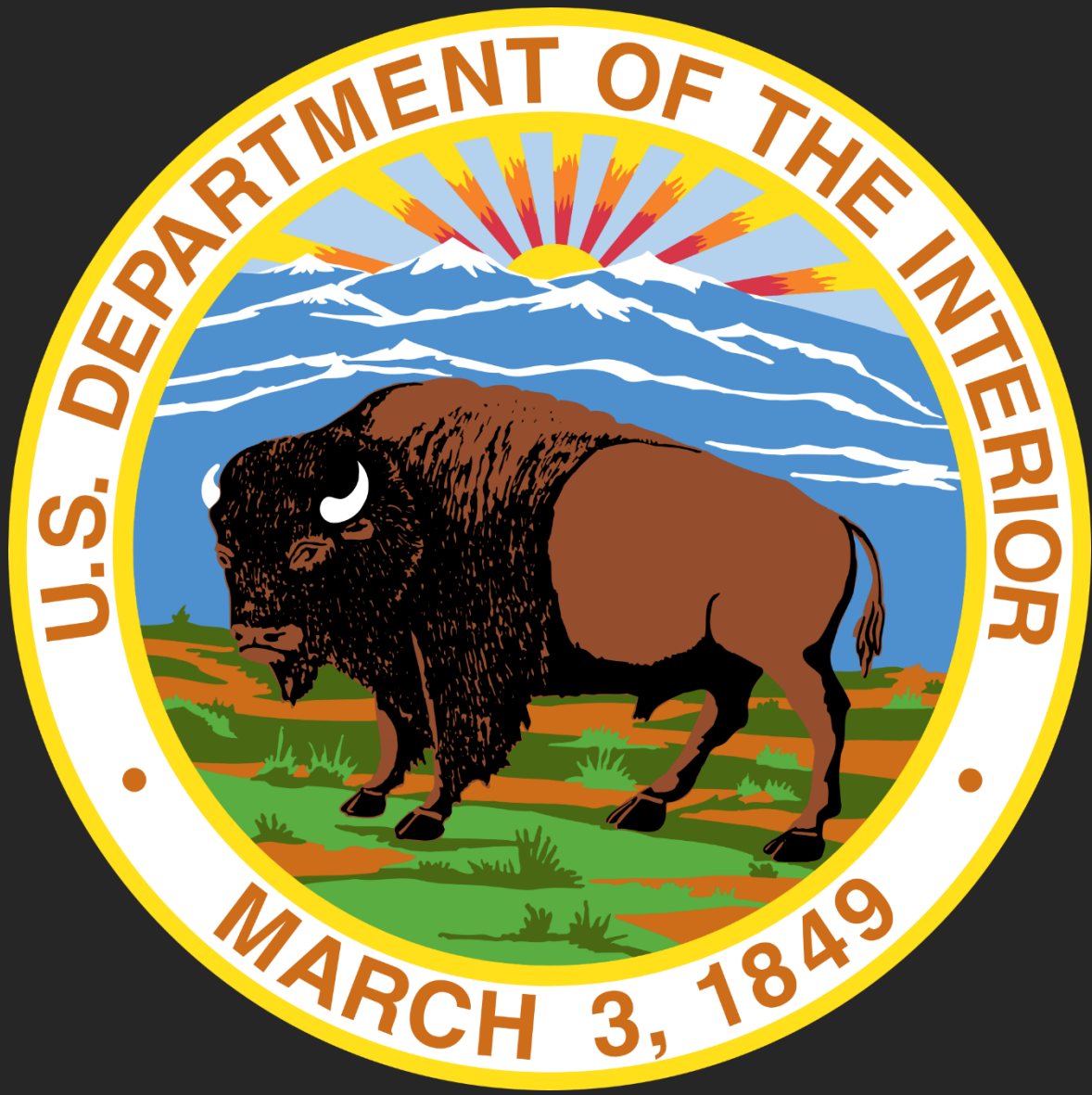
JUDICIAL

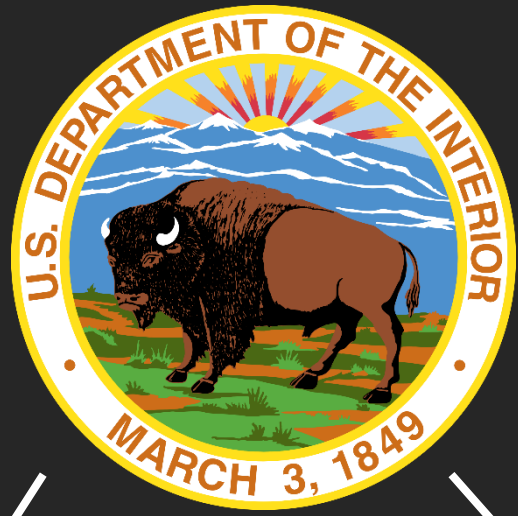


- ★ Decides if laws are constitutional
- ★ Are appointed by the president
- ★ There are 9 justices
- ★ Can overturn rulings by other judges

4 Federal Land Management Agencies









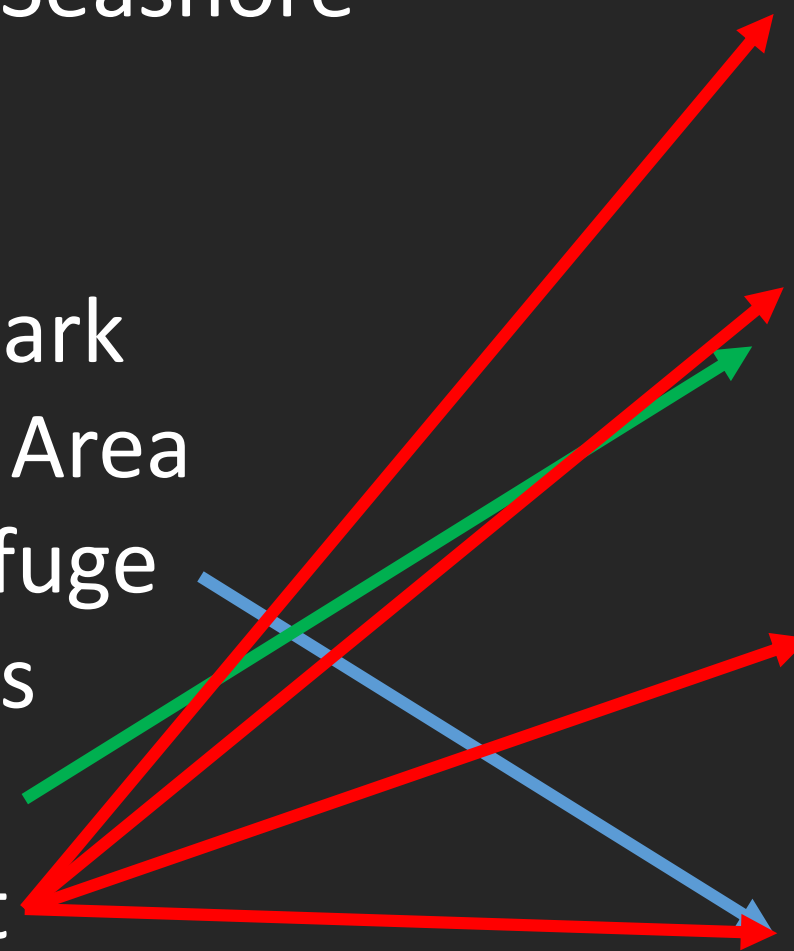
1916

Established to
protect an existing
12 National Parks
and 19 National
Monuments.

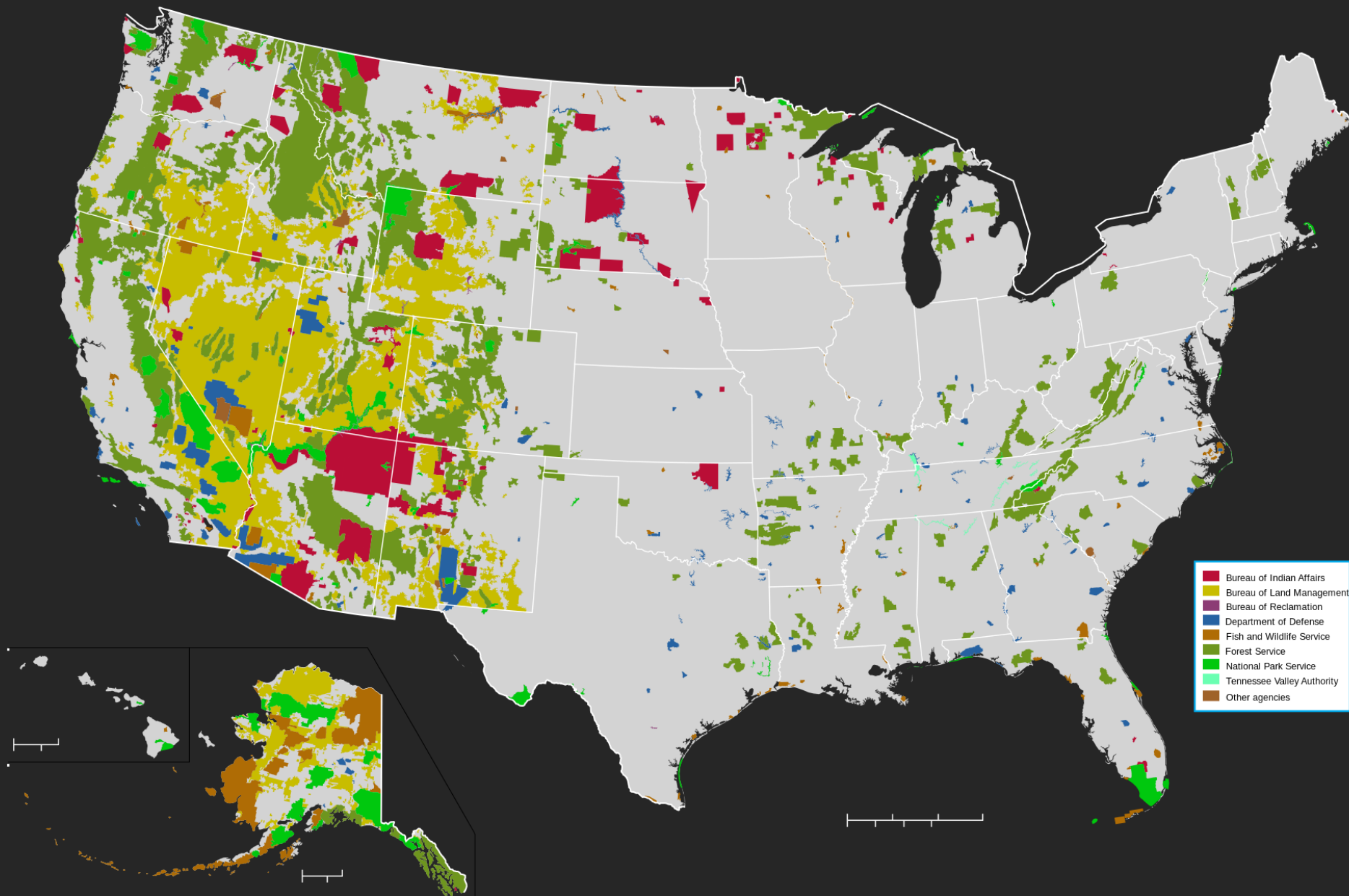
Rocky Mountain National Park was
one of them!

Managed by the NPS?

- National Lakeshore/Seashore
- National Park
- National Battlefield
- National Historical Park
- National Recreation Area
- National Wildlife Refuge
- National Scenic Trails
- National Forest
- National Monument



413 National Park Service Units, 58 are National Parks





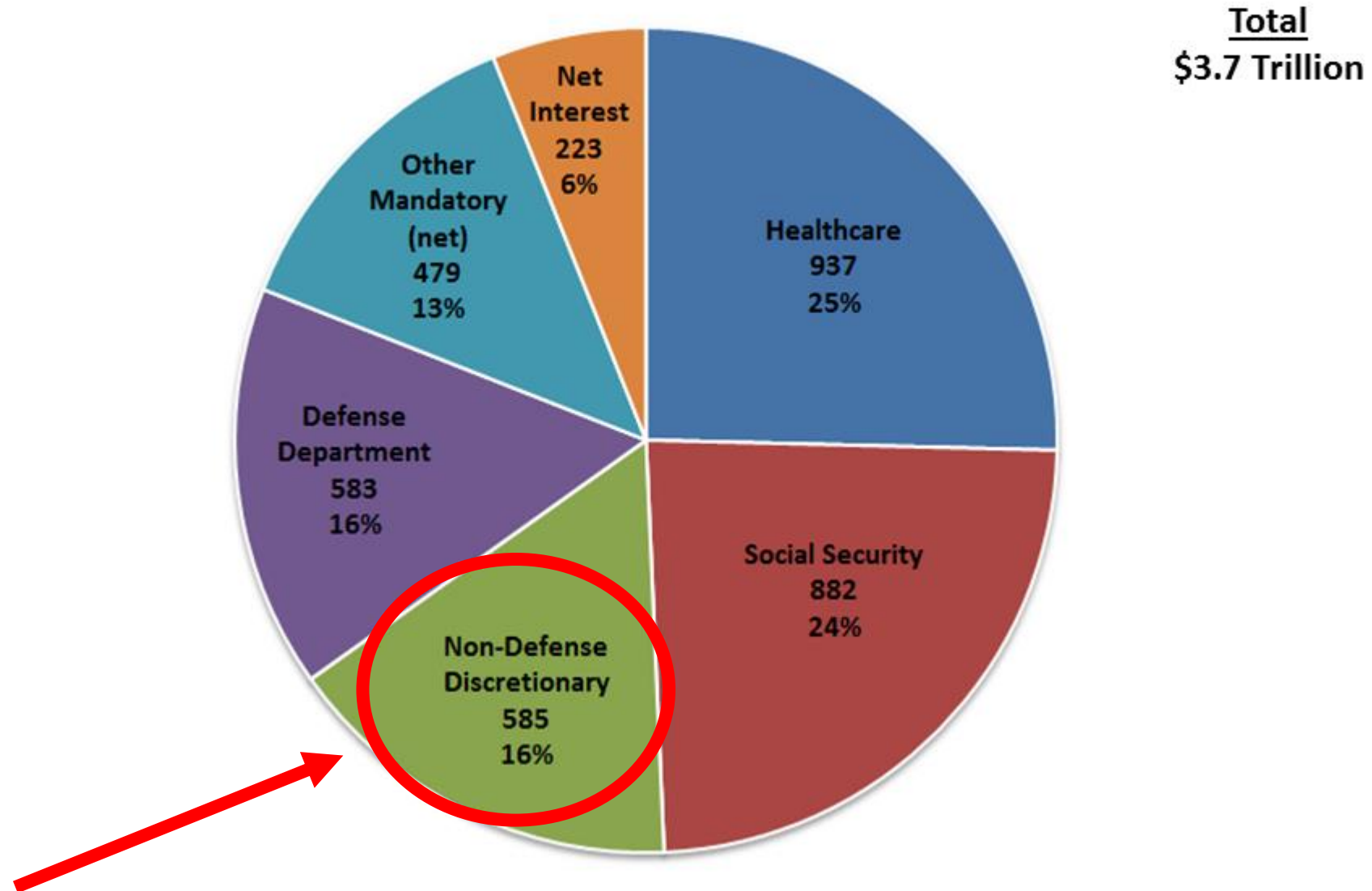
To **preserve unimpaired** the natural and cultural resources and values of the **national park** system for the enjoyment, education, and inspiration of this and future generations.

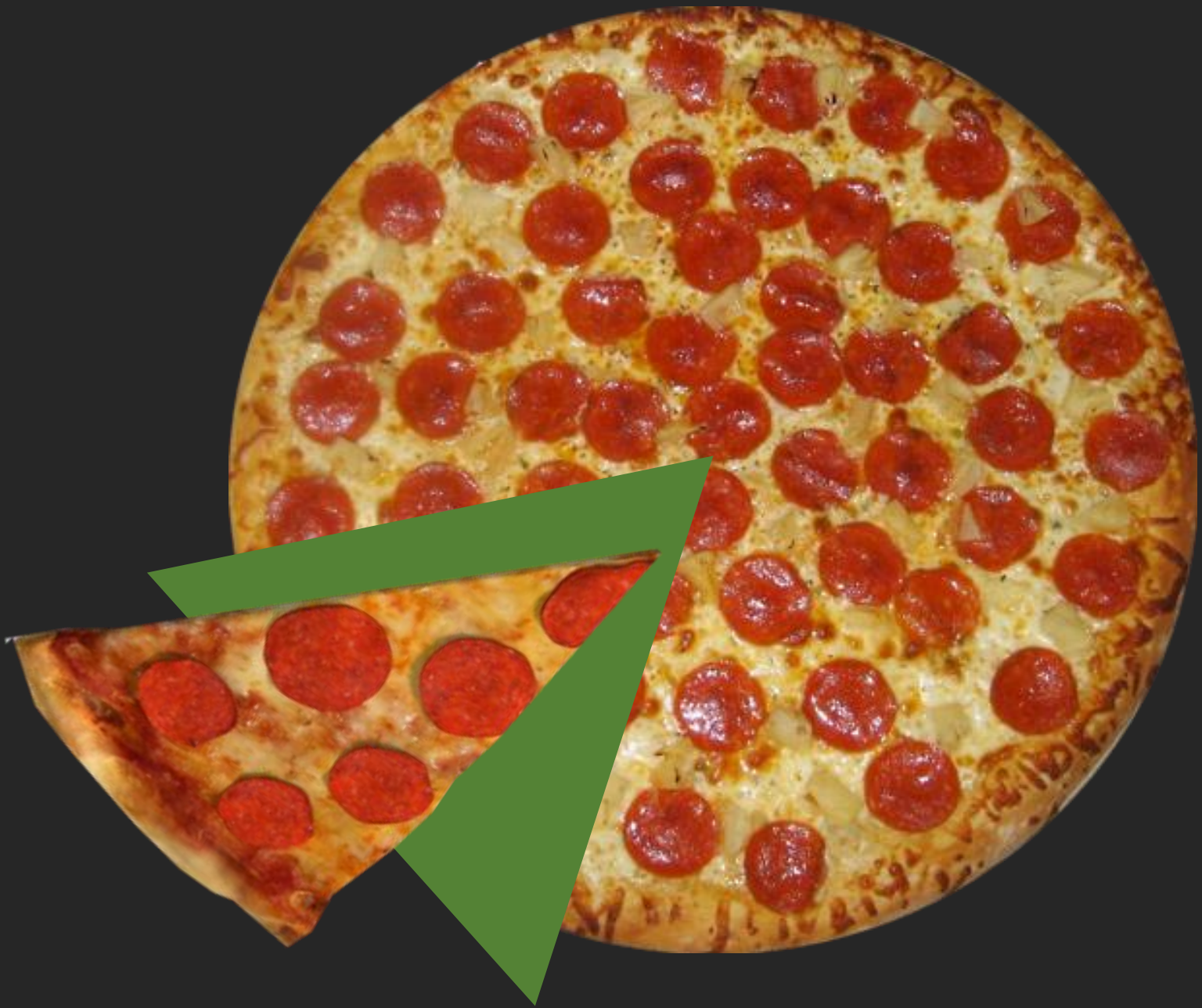
Activity

Look at your list of items. Pick three that you think are the most important.

Why are these the most important?

U.S. Federal Spending – Fiscal Year 2015 (\$ Billions)







Fixed Costs (Entitlements) and Special Funding (Discretionary)

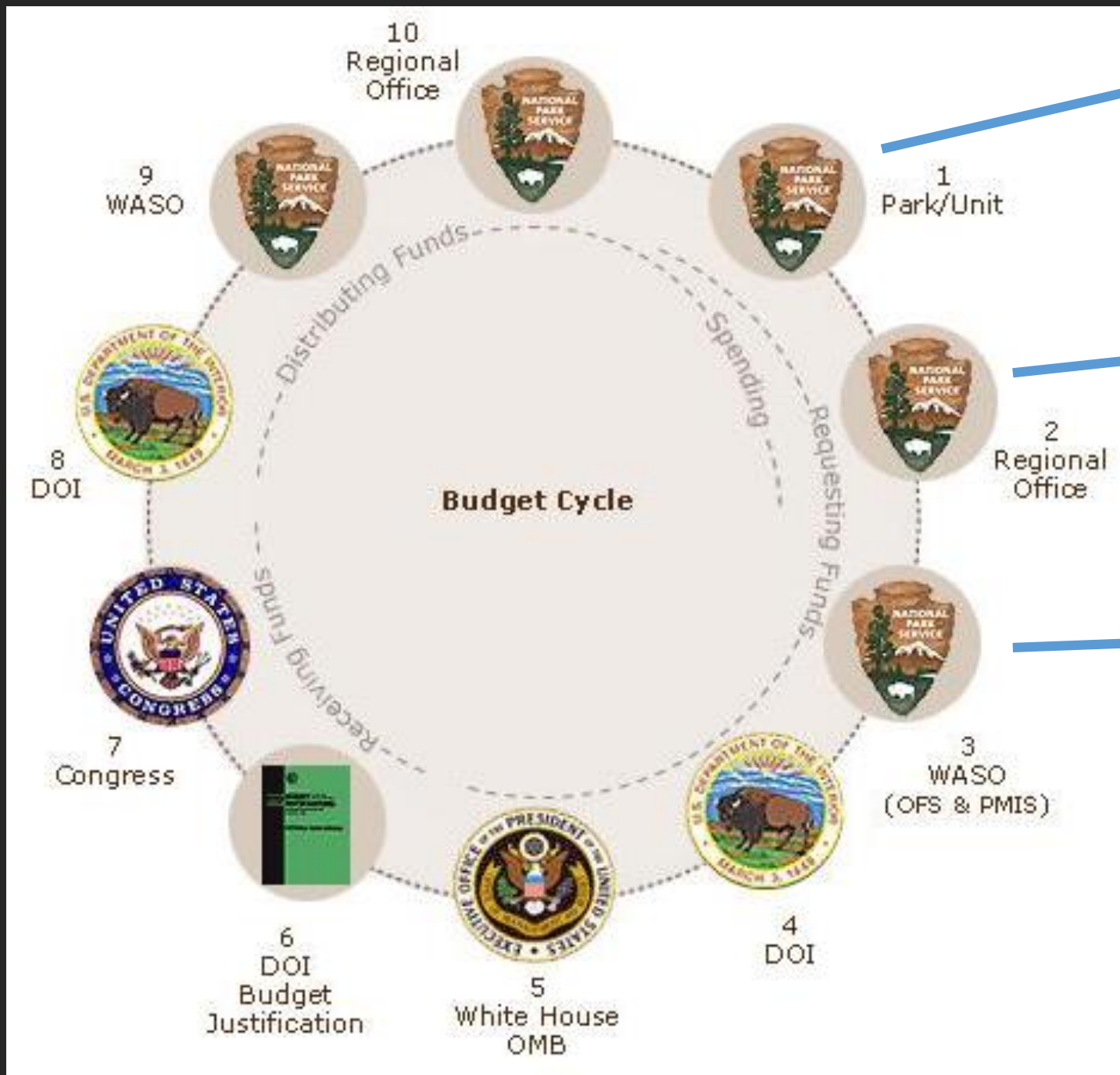
Fixed Costs (Entitlements): Has to be paid based on a law.



Special Funding (Discretionary): Optional projects that don't always get funded.

Activity

Look at your top three most important items. Write down next to them whether you think they are a fixed cost or have special funding.



Rocky Mountain National Park

Intermountain Regional Office

National Park Service Office in Washington D.C.

This whole process takes about 2 years.

Rocky Mountain National Park's
Budget:

\$12.5 million

Activity



Who shares Rocky Mountain National Park's budget?
Brainstorm at least three.

Rocky Mountain National Park

Administration

Resources



Fire Management
Cultural Resources
Natural Resources

Maintenance



Buildings
Utilities
Grounds
Engineers
Roads
Trails

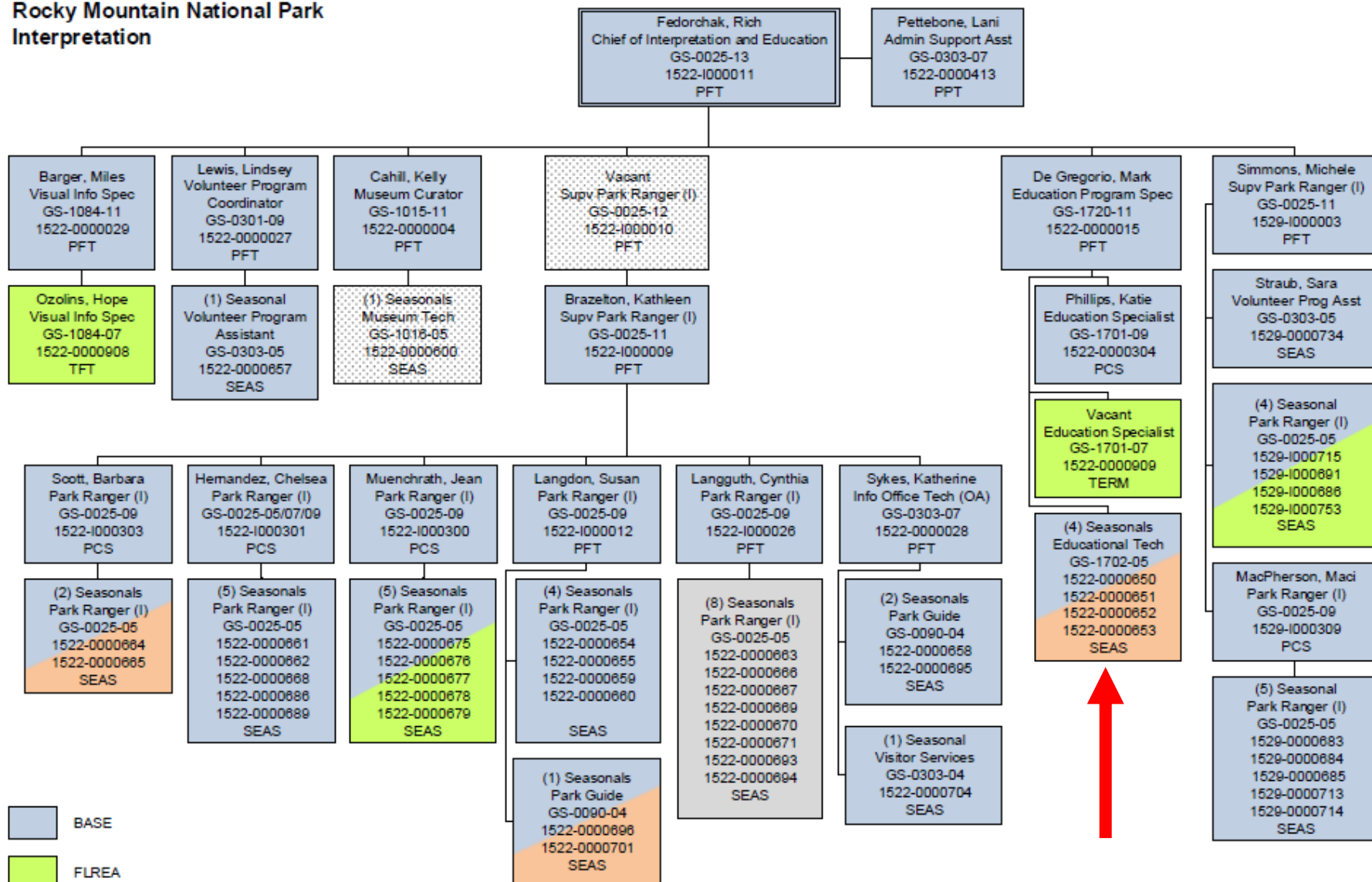
Interpretation &
Education

Visitor and
Resource
Protection



Wilderness
Search &
Rescue

Rocky Mountain National Park Interpretation



- BASE
- FLREA
- DONATION
- OTHER
- UNFUNDED

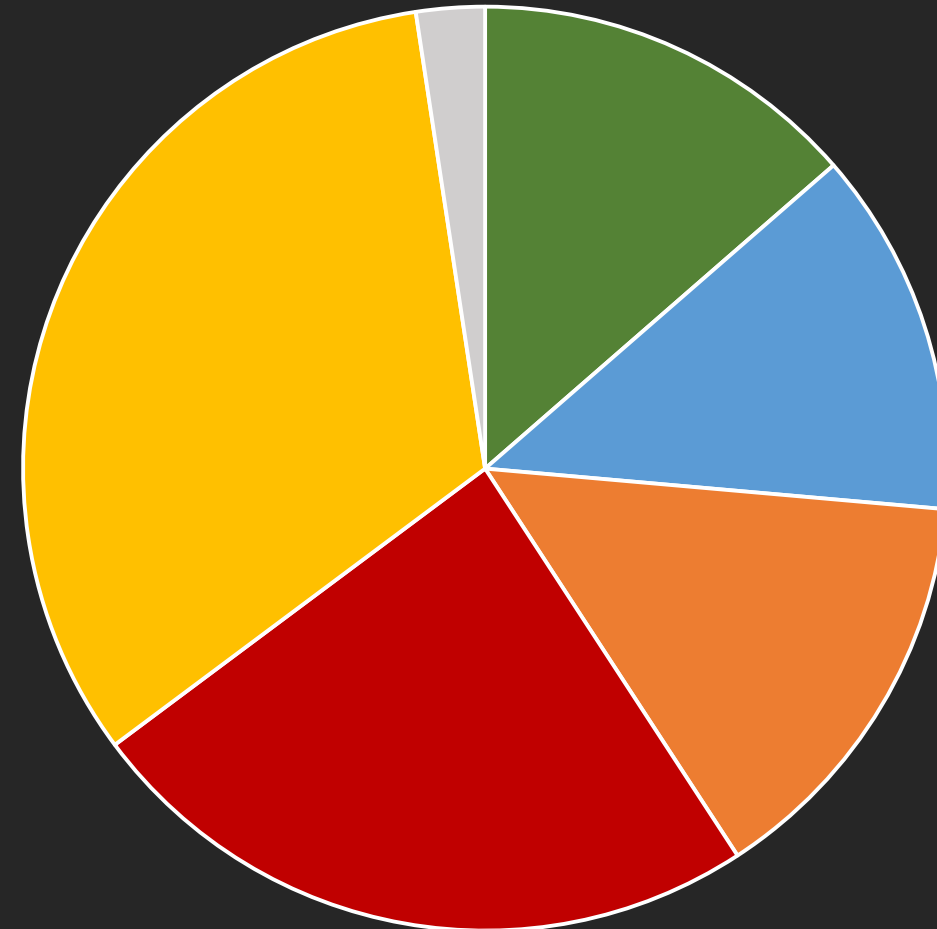
Approved: _____
 (Signature) (Date)

Title: Superintendent

Total: \$12.5 million

- \$1.7 million – Resources
- \$1.6 million – Administration
- \$1.8 million – Interpretation
- \$3.0 million – Visitor and Resource Protection
- \$4.1 million – Maintenance
- \$0.3 million – Other projects

Rocky Mountain National Park's Budget



Resources Admin Interp Protection Maint Other

Why does it work this way?

Budget and Accounting Act of 1921

Congressional Budget and

Impoundment Control Act of 1974

And many other budget laws...

What does the future look like?



Activity

What do you think about the future of the NPS?

NPS Director's Order 21



How to get involved!

- People, Environment, and Public Comment:
<http://parkplanning.nps.gov>
- Donate!
- Volunteer!



Questions?